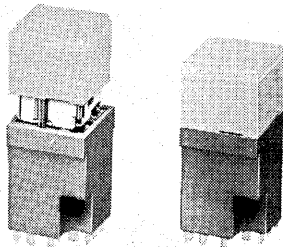
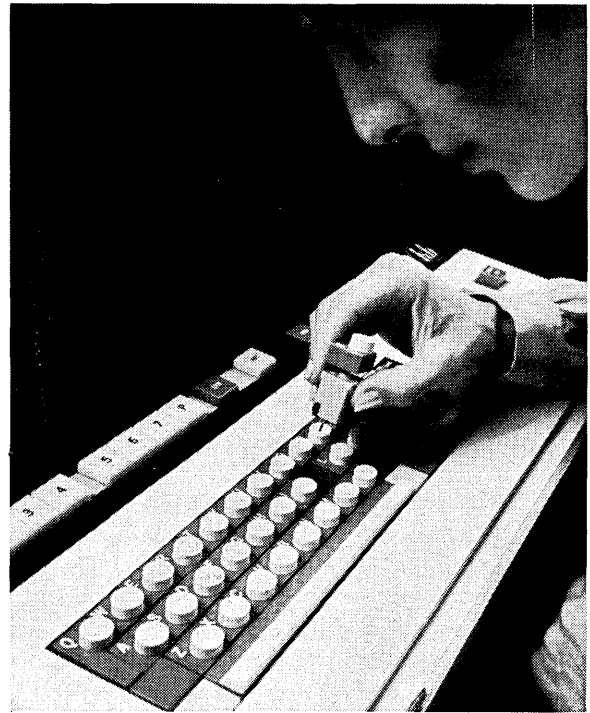
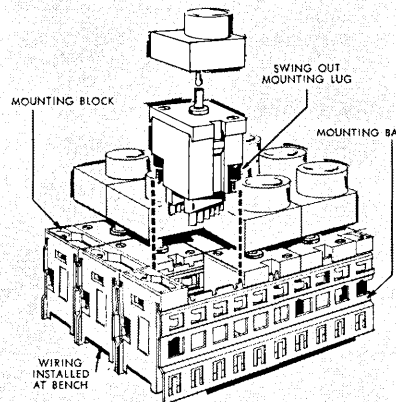


# NEW MICRO SWITCH KB makes it practical for you to customize any keyboard or panel

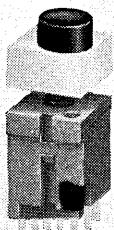
KB gives you a complete new set of modular switch/display keyboard components—makes it practical for you to design and assemble a custom man/machine interface for each individual keyboard. KB is a totally new concept in panel design with *modular* components like these:



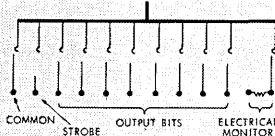
**Plug-in Power Switches and Indicators** with lighted display, wide variety of button color combinations. Two- or four-pole, momentary or alternate action switches.



**Unique Mounting Matrix Modules** allow you to bench-assemble a complete keyboard matrix without special tools. Assembly, encoding and wiring may be done at the bench before the keyboard is installed.



**Plug-in Encoding Switches** with up to eight output bits in each. Up to 256 possible code combinations may be set up within the switch using simple encoding strips. Electrical monitor and delayed strobe. Wide variety of button color combinations.



**Contact Arrangement.** The common and electrical monitor circuits are made first, followed by the output bits, and the strobe circuit which tells other equipment, "All circuits made and ready." ("Repeat" function optional.)

For the first time, KB allows you to arrange all switches and indicators in only *one* panel cutout. You can now do all your encoding at the switches. Plug-in or lift-out switches without disturbing adjacent units. Use *modular* interlock components for bailing or lockout systems.

KB now makes it practical for you to customize every keyboard or control panel. KB saves on engineering time, tooling costs, assembly costs, panel space and weight.

Call a MICRO SWITCH Branch Office for a demonstration. Or, write for literature.

## MICRO SWITCH

FREEPORT, ILLINOIS 61033

A DIVISION OF HONEYWELL

IN CANADA: HONEYWELL CONTROLS LIMITED, TORONTO 17, ONTARIO